



LANDSLIDE ADVISORY



ANTICIPATED LOSSES

Very High Risk Zones

 Towns at Risk	 Infrastructure at Risk	 Roads at Risk (Km)	 Population
18	12,319	1014.95 Km	7.1 Mn

High Risk Zones

 Towns at Risk	 Infrastructure at Risk	 Roads at Risk (Km)	 Population
19	16,323	1431.99 Km	7.3 Mn

Medium Risk Zones

 Towns at Risk	 Infrastructure at Risk	 Roads at Risk (Km)	 Population
15	11,043	1424.71 Km	6.1 Mn

Low Risk Zones

 Towns at Risk	 Infrastructure at Risk	 Roads at Risk (Km)	 Population
23	15,555	1955.12 Km	8.6 Mn

LIKELY IMPACT AREAS

Khyber Pakhtunkhwa

Chitral	Swat	Shangla
Battagram	Mansehra	Khyber
Torghar	Kohistan	

Gilgit Baltistan

Hunza	Skardu	Ghanche
Astore		

AJ & K

Muzaffarabad	Haveli	Bhattian
---------------------	---------------	-----------------

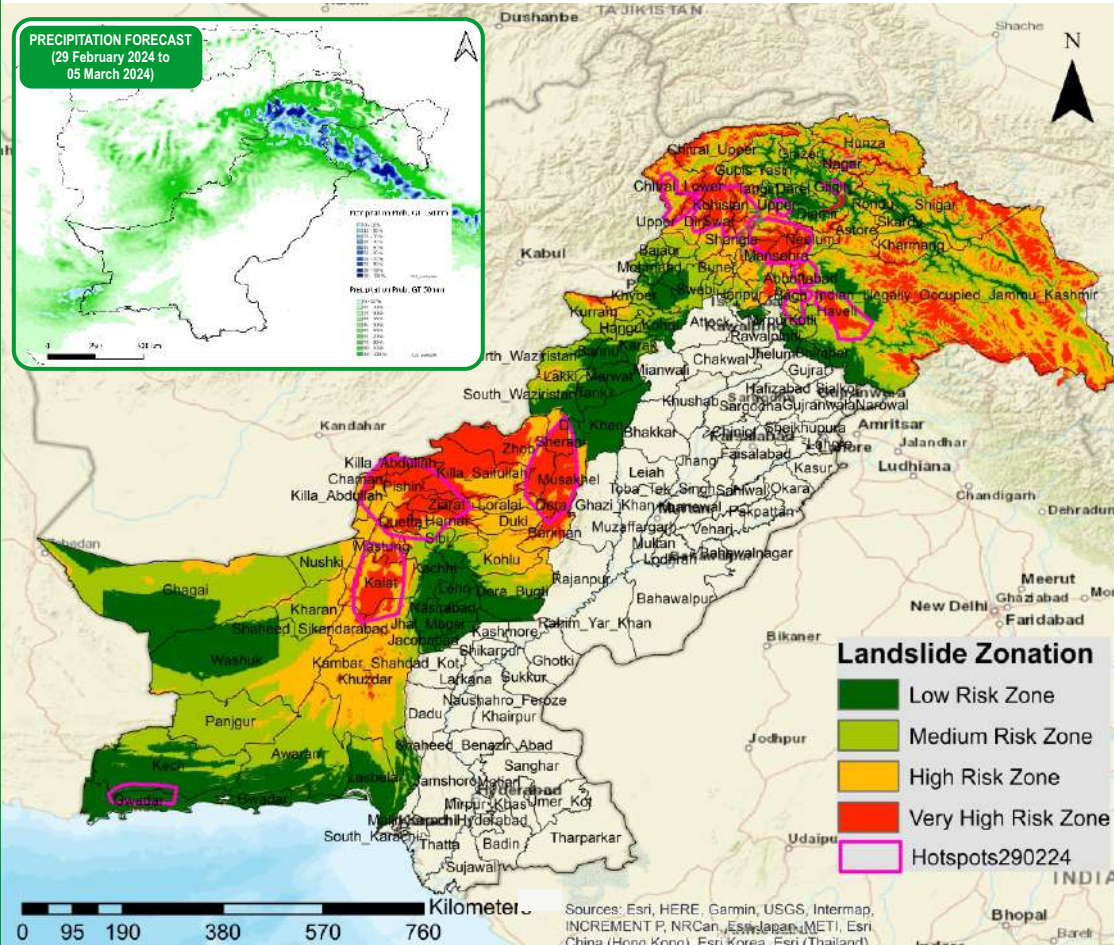
Balochistan

Sherani	Zhob	Musakhel
Killah Saifullah	Pishin	Ziarat
Kalat	Quetta	Mastung

IMMEDIATE ACTION

- It is advised to be watchful of Landslides, Slope failures, Rock falls and Ground Subsidence in high vulnerable zones (encircled) in map, avoid unnecessary travel.
- PDMA, Rescue Services, Armed Forces and leading NGOs / CSOs to ensure availability of personnel / equipment in the indicated areas and be on stand-by for rapid response in case of any forecasted adverse weather systems.

Landslide Vulnerable Zones



FORECASTED IMPACT

- Reference to National Common Operating Picture (NCOP), most of the part of the country will receive heavy rain & snowfall in most of the country. Heavy rainfall upto 150mm is expected in some of the northern area till 05 March, 2024.
- As heavy to moderate rain may persist for some days, localized landslides may occur in very high to moderate risk zones (shown through Hotspots). Some area of Gwadar (Hotspot) may experience mudflow due to persistent rain.
- Karakurm highway at Upper & Lower Kohistan (approx 66km), at Gilgit (approx 35km) and at Nagar (approx 33km) is at high risk of landslide.
- It is advised to watchful of landslide, Slope failure, Rock falls and Groundsubsidence in high vulnerable zones in colored map, avoid unnecessary travel.
- Stay updated on weather & roads condition through social media and local news.